



Speed & Power Up Adopt 3 Starts Screw

Increase Working Performance & Shock Absorbing Capacity

Absolute Workability

**HIGH PERFORMANCE
SPEED HAMMER**

CS SPEEDRILL

Chang Shin International

Tel : 82-52-239-3878

Fax : 82-52-237-0358

Email : csi@okcsi.com

Http : www.okcsi.com



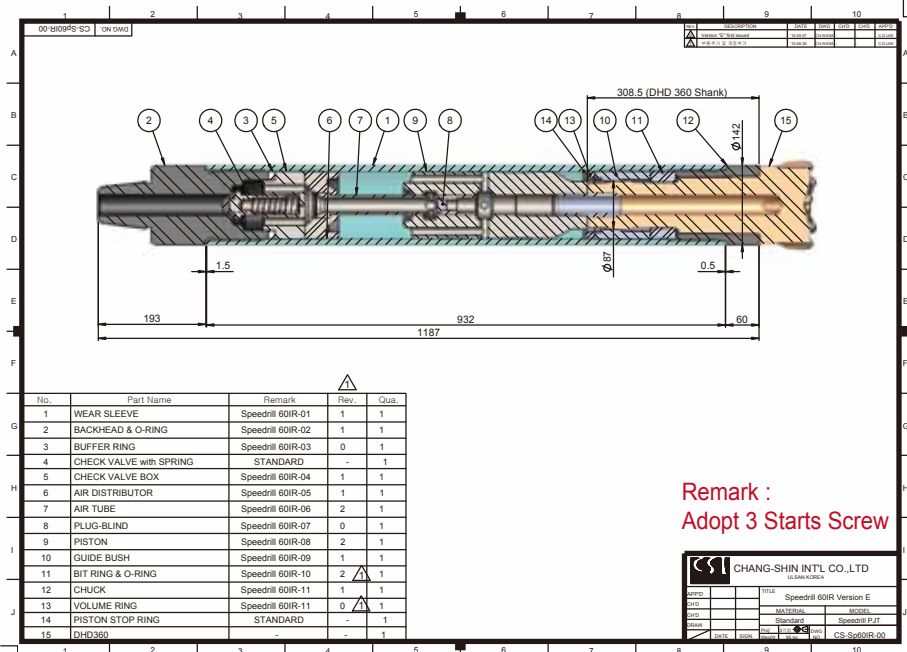


HIGH PERFORMANCE SPEED HAMMER CS SPEEDRILL

CS Speedrill increase working speed and power with optimization of inner structure and piston. Especially for the upper and the lower surface of piston, they have same shape and area to make air flow perfectly. And that is a **patent technique** of Chang Shin International.

CS Speedrill has been changed inner structure from Cylinder type to Tube type. And piston and chamber shapes are optimized for the best air flowing performance. It shows better power for DTH drilling jobs by **increasing stroke and piston weight**.

TECHNICAL SPECIFICATION

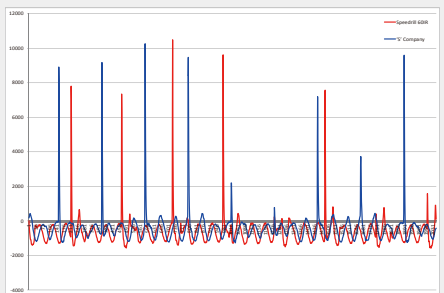


- Backhead Connection : API 3-1/2 Reg Pin
- Chuck Connection : DHD360
- Configuraitoin Available Bit Size : 149 ~ 225mm
- Length(Without Bit) : 1187mm
- Outside Diameter : 142mm
- Piston Stroke : 110mm
- Net Weight : 95kg
- Gross Weight : 102kg

Performance Test 1



'S' Company

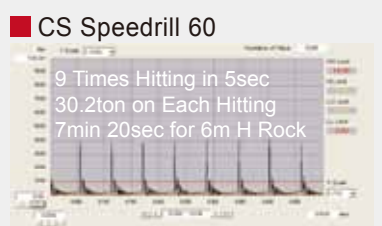
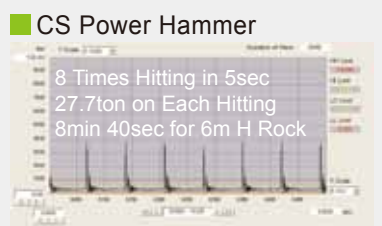


CS Speedrill

- 'S' Company
- CS Speedrill 60

Working Pressure 8.5bar
18Hz/ Blow Pressure 42bar
(Static Force 30.257kgf)

Performance Test 2



Increase 12.5% Frequency
Increase 9% Hitting Power
Increase 18% Penetration Speed